



云展网

yunzhan365.com

CATALOGUE

MICROSCOPE & ACCESSORIES

CONTENTS



MICROSCOPE

03

OBJECTIVE



云展网

yunzhan365.com

09

LED ILLUMINATOR

05

CAMERA

06

● Stereo Microscope

With a dissecting microscope one can work on a specimen in real-time while it is still being observed. Unlike the typical compound microscope, a dissecting microscope has a longer working distance that allows for dissecting objects or even perform microsurgery.



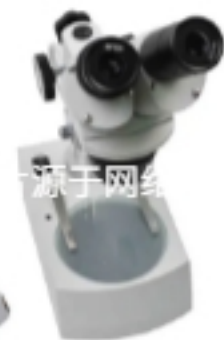
● Application

Stereo microscope magnification helps sort and visualize peripheral surfaces in three-dimensions which allows for a thorough examination of objects. Stereo microscopes are used by technicians to repair circuit boards, paleontologists to clean and examine fossils, technicians to perform mud logging, specialists to analyze fabric and textiles, or anyone that wishes to view or work on small objects.



云展网

yunzhan365.com



STEREO MICROSCOPE



STL2



● SPECIFICATION

Eyepiece	Standard		Auxiliary Lens 0.5X		Auxiliary Lens 1.5X		Auxiliary Lens 2X	
	W.D. 105mm		W.D. 177mm		W.D. 47mm		W.D. 26mm	
	Mag.	F.O.V	Mag.	F.O.V	Mag.	F.O.V	Mag.	F.O.V
10X/22mm	6.7X	32.8mm	3.4X	65.7mm	10.1X	21.9mm	13.4X	16.4mm
	45.0X	4.9mm	22.5X	9.8mm	67.5X	3.3mm	90.0X	2.4mm
15X/16mm	10.1X	23.9mm	5.0X	47.8mm	15.1X	15.9mm	20.1X	11.9mm
	67.5X	3.6mm	33.8X	7.1mm	101.3X	2.4mm	135.0X	1.8mm
20X/12mm	13.4X	17.9mm	6.7X	38.5mm	20.1X	11.9mm	26.8X	9.0mm
	90.0X	2.7mm	45.0X	5.3mm	135.0X	1.8mm	180.0X	1.3mm
25X/9mm	16.8X	13.4mm	8.4X	26.9mm	25.1X	9.0mm	33.5X	6.7mm
	112.5X	2.0mm	56.3X	4.0mm	168.8X	1.3mm	225.0X	1.0mm
30X/8mm	20.1X	11.9mm	10.1X	23.8mm	30.2X	7.9mm	40.2X	6.0mm
	135.0X	1.8mm	67.5X	3.6mm	202.5X	1.2mm	270.0X	0.9mm
Magnification	6.7X-45X, 3.4X-270X with optional eyepieces and objectives							
Eyepiece	WF10X/22mm high-eyepoint, wide-field; Convenient for observers wearing glasses							
Optional Eyepiece	WF10X/22mm, WF15X/16mm, WF20X/12mm, WF25X/9mm, WF30X/8mm							
Main Body	Trinocular head, 45° or 60° inclined, 360° rotatable, can be locked in any position desired							
	Interpupillary Distance adjustment:54-75mm; Diopter adjustment:±5 diopters							
Objective	0.67X-4.5X stereo zoom; Zoom Ratio:6.7:1							
Aux Lens	0.3X, 0.5X, 0.7X, 0.75X, 1.5X, 2X							

STEREO MICROSCOPE



STL6



● SPECIFICATION

Eyepiece	Standard		Auxiliary Lens 0.5X		Auxiliary Lens 1.5X		Auxiliary Lens 2X	
	W.D. 100mm		W.D. 165mm		W.D. 45mm		W.D. 30mm	
	Mag.	F.O.V	Mag.	F.O.V	Mag.	F.O.V	Mag.	F.O.V
10X/20mm	7.0X	28.6mm	3.5X	57.1mm	10.5X	19mm	14.0X	14.3mm
	45.0X	4.4mm	22.5X	8.9mm	67.5X	3mm	90.0X	2.2mm
15X/15mm	10.5X	21.1mm	5.25X	42.8mm	15.75X	14.3mm	21.0X	10.7mm
	67.5X	3.3mm	33.75X	6.7mm	101.25X	2.2mm	135.0X	1.7mm
20X/10mm	14.0X	14.3mm	7.0X	28.6mm	21.0X	9.5mm	28.0X	7.1mm
	90.0X	2.2mm	45.0X	4.4mm	135.0X	1.5mm	180.0X	1.1mm
25X/9mm	17.5X	12.9mm	8.85X	25.4mm	26.2X	8.6mm	35.0X	6.4mm
	112.5X	2.0mm	56.3X	4.0mm	168.8X	1.3mm	225.0X	1.0mm
30X/8mm	21.0X	11.4mm	10.5X	22.9mm	31.5X	7.6mm	42.0X	5.7mm
	135.0X	1.8mm	67.5X	3.6mm	202.5X	1.2mm	270.0X	0.9mm
Magnification	7X-45X, 3.5X-270X with optional eyepieces and objectives							
Eyepiece	WF10X/20mm high-eyepoint, wide-field; Convenient for observers wearing glasses							
Optional Eyepiece	WF10X/20mm, WF15X/15mm, WF20X/10mm, WF25X/9mm, WF30X/8mm							
Main Body	Trinocular head, 45° inclined, 360° rotatable, can be locked in any position desired							
	Interpupillary Distance adjustment:54-76mm; Diopter adjustment:±5 diopters							
Objective	0.7X-4.5X stereo zoom; Zoom Ratio:6.4:1							
Aux Lens	0.3X, 0.5X, 0.7X, 0.75X, 1.5X, 2X							

STEREO MICROSCOPE



45NT



● SPECIFICATION

Eyepiece	Standard		Auxiliary Lens 0.5X		Auxiliary Lens 1.5X		Auxiliary Lens 2X	
	W.D. 100mm		W.D. 165mm		W.D. 45mm		W.D. 30mm	
	Mag.	F.O.V	Mag.	F.O.V	Mag.	F.O.V	Mag.	F.O.V
10X/20mm	7.0X	28.6mm	3.5X	57.1mm	10.5X	19mm	14.0X	14.3mm
	45.0X	4.4mm	22.5X	8.9mm	67.5X	3mm	90.0X	2.2mm
15X/15mm	10.5X	21.1mm	5.25X	42.8mm	15.75X	14.3mm	21.0X	10.7mm
	67.5X	3.3mm	33.75X	6.7mm	101.25X	2.2mm	135.0X	1.7mm
20X/10mm	14.0X	14.3mm	7.0X	28.6mm	21.0X	9.5mm	28.0X	7.1mm
	90.0X	2.2mm	45.0X	4.4mm	135.0X	1.5mm	180.0X	1.1mm
25X/9mm	17.5X	12.9mm	8.85X	25.4mm	26.2X	8.6mm	35.0X	6.4mm
	112.5X	2.0mm	56.3X	4.0mm	168.8X	1.3mm	225.0X	1.0mm
30X/8mm	21.0X	11.4mm	10.5X	22.9mm	31.5X	7.6mm	42.0X	5.7mm
	135.0X	1.8mm	67.5X	3.6mm	202.5X	1.2mm	270.0X	0.9mm
Magnification	7X-45X, 3.5X-270X with optional eyepieces and objectives							
Eyepiece	WF10X/20mm high-eyepoint, wide-field; Convenient for observers wearing glasses							
Optional Eyepiece	WF10X/20mm, WF15X/15mm, WF20X/10mm, WF25X/9mm, WF30X/8mm							
Main Body	Binocular head, 45° inclined, 360° rotatable, can be locked in any position desired Interpupillary Distance adjustment:54-76mm; Diopter adjustment:±5 diopters							
Objective	0.7X-4.5X stereo zoom; Zoom Ratio:6.4:1							
Aux Lens	0.3X, 0.5X, 0.7X, 0.75X, 1.5X, 2X							

STEREO MICROSCOPE



3024



● SPECIFICATION

Objective	Eyepiece								W.D.(mm)
	WF5X		WF10X		WF15X		WF20X		
	Mag.	F.O.V	Mag.	F.OV.	Mag.	F.OV.	Mag.	F.OV.	
1X	5X	18.0mm	10X	20.0mm	15X	13.0mm	20X	10.0mm	56
2X	10X	9.0mm	20X	10.0mm	30X	6.5mm	40X	5.0mm	81
3X	15X	6.0mm	30X	6.7mm	45X	4.3mm	60X	3.3mm	61
4X	20X	4.5mm	40X	5.0mm	60X	3.25mm	80X	2.5mm	58
6X	30X	3.0mm	60X	3.35mm	90X	2.2mm	120X	1.67mm	66
Magnification	10x/20x, 10x/30x, 20x/40x with different two-magnification levels								
Eyepiece	WF10X/20mm;high-eyepoint,wide-field;Convenient;forobservers wearing glasses								
Optional Eyepiece	WF5X, WF10X, WF15X, WF20X								
Main Body	Binocular fixed head,45° inclined								
	Interpupillary Distance adjustment:55-75mm; Diopter adjustment:±5 diopters								
Objective	1X, 2X, 3X, 4X, 6X								
Stand	2L pole stand.								
Illumination	12v/10w incandescent lamp								
	12v/10w halogen lamp								
	LED illumination(Rechargeable for option)								

STEREO MICROSCOPE



BJ-X



● SPECIFICATION

Eyepiece	Plan eyepiece 10×/18mm
Objective	Long work distance plan objective: 10×/0.25, WD7.3mm; 50×/0.70, WD 0.5mm
Total Magnification	100×, 500×
Mechanical tube length	160mm
Focusing range	20mm
Illumination	Adjustable LED light(chargeable)
Dimension	23cm*11cm*7cm
Weight	0.75kg
Optional Parts	WF16×, WF20×, WF10×/18 eyepiece with crossing line
	Long work distance plan 5×, 20× and 40× objectives
	Digital Cameras
	Magnetic base

OBJECTIVE



Finite Achromatic Objective 195mm						
Magnification	4X	10X	20X	40X	60X	100X
NA	0.10	0.25	0.40	0.65	0.80	1.25
WD(mm)	37.50	6.55	2.10	0.65	0.46	0.198
USD	1.6	3.6	5.9	5.4	8.5	7.4



Finite Plan Achromatic Objective 195mm						
Magnification	4X	10X	20X	40X	60X	100X
NA	0.10	0.25	0.40	0.65	0.75	1.25
WD(mm)	28.90	5.84	1.16	0.62	0.49	0.230
USD	10.0	18.5	18.1	24.5	21.5	



云展网

yunzhan365.com



Infinite Achromatic Objective (f'=180mm)						
Magnification	4X	10X	20X	40X	60X	100X
NA	0.10	0.25	0.40	0.65	0.80	1.25
WD(mm)	43.07	6.78	2.67	0.65	0.30	0.190
USD	2.8	4.7	10.5	8.9	16.9	12.3



Infinite Plan Achromatic Objective (f'=180mm)						
Magnification	4X	10X	20X	40X	60X	100X
NA	0.10	0.25	0.40	0.65	0.80	1.25
WD(mm)	19.73	15.86	1.04	0.67	0.50	0.250
USD	8.0	19.6	25.8	27.4	39.7	33.6

OBJECTIVE



Infinite Plan Flour Semi-APO Objective($f=180\text{mm}$)						
Magnification	4X	10X	20X	40X	60X	100X
NA	0.10	0.25	0.40	0.65	N/A	1.25
WD(mm)	17.15	7.65	1.96	0.78	N/A	0.150
USD	33.5	70.5	113.3	168.9	N/A	258.6



Infinite Plan NUV M26X1/36 APO Objective($f=200\text{mm}$)				
Magnification	20X	50X	100X	500X
NA	0.70	0.80	0.75	
WD(mm)	3.20	1.30		
USD	1000.0	1265.0	4350.0	NA



Infinite Plan Long Distance 95mm M26X1/36 APO Objective($f=200\text{mm}$)						
Magnification	2X	5X	10X	20X	50X	100X
NA	0.06	0.14	0.28	0.34	0.50	0.70
WD(mm)	33.72	33.62	33.40	29.56	18.90	7.100
USD	196.9	212.3	227.0	287.7	584.6	NA



Infinite Plan NIR LCD 400-1064nm M26X1/36 APO Objective($f=200\text{mm}$)								
Magnification	2X	5X	10X	20X	20X	50X	50X	100X
NA	0.06	0.15	0.30	0.30	0.45	0.45	0.65	0.80
WD(mm)	34.00	45.00	34.00	31.00	20.20	20.16	9.600	6.000
USD	355.4	344.6	593.9	724.7	885.6	1020.0	1187.7	3325.4

FLUORESCENCE LED ILLUMINATOR

● IS3/4/9

Exceeds the brightness of 100W Mercury Lamp

Cool light

Instant ON/OFF

No warm-up or cool-down required

Adjustable light output

Easy installation



● APPLICATION



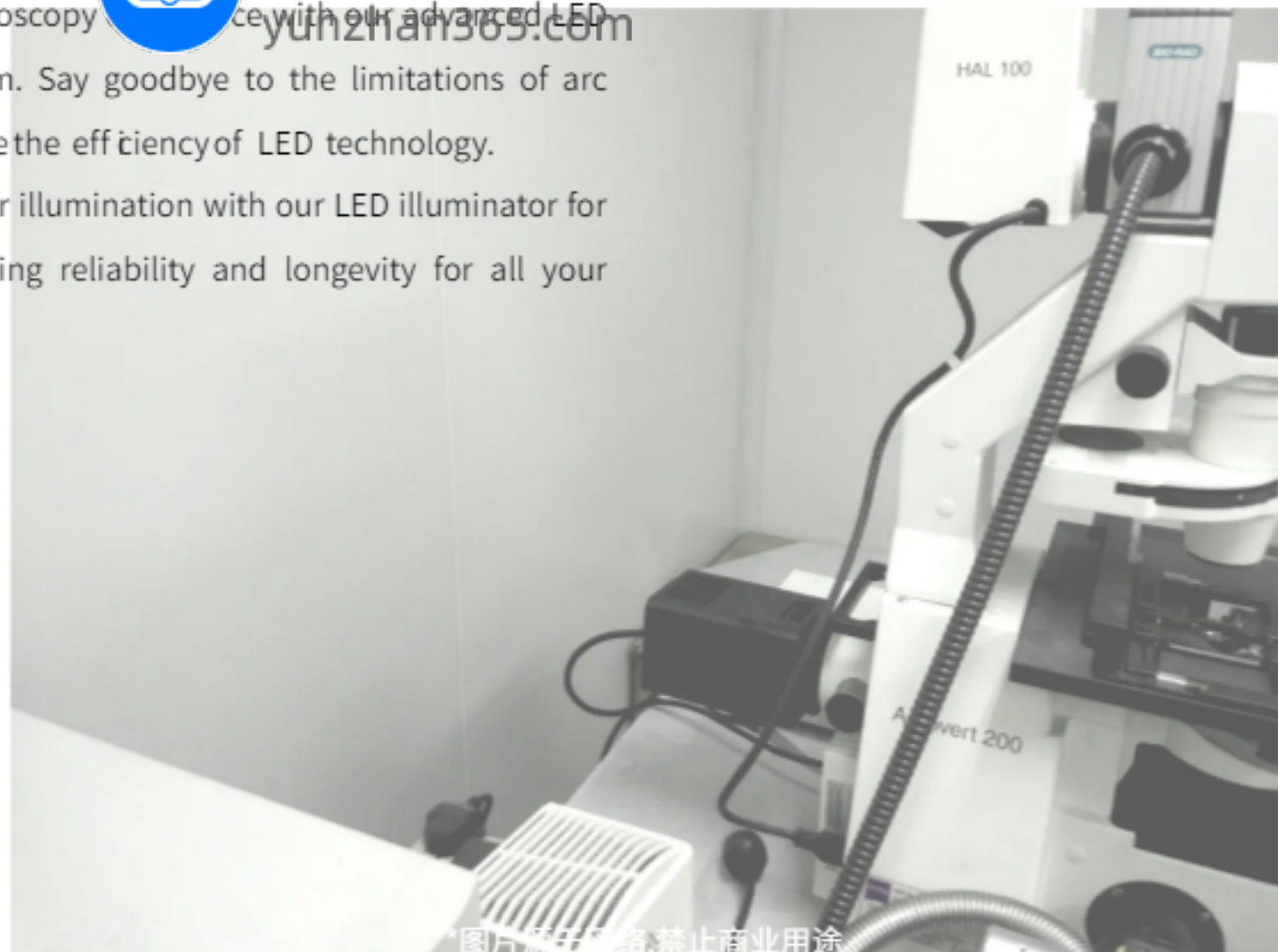
云展网

Upgrade your microscopy illumination system. Say goodbye to the limitations of arc lamps and embrace the efficiency of LED technology.

Experience superior illumination with our LED illuminator for microscopes, offering reliability and longevity for all your microscopy needs.

Upgrade your microscopy illumination system. Say goodbye to the limitations of arc lamps and embrace the efficiency of LED technology.

Experience superior illumination with our LED illuminator for microscopes, offering reliability and longevity for all your microscopy needs.



图片来源于网络,禁止商业用途

● I3-SPECIFICATION

DAPI 365~380nm

FITC 450~495nm

Cy3 505~545nm



● IS4/6 SPECIFICATION

DAPI 365~380nm

FITC 450~495nm

Cy3 505~545nm

Cy5 625

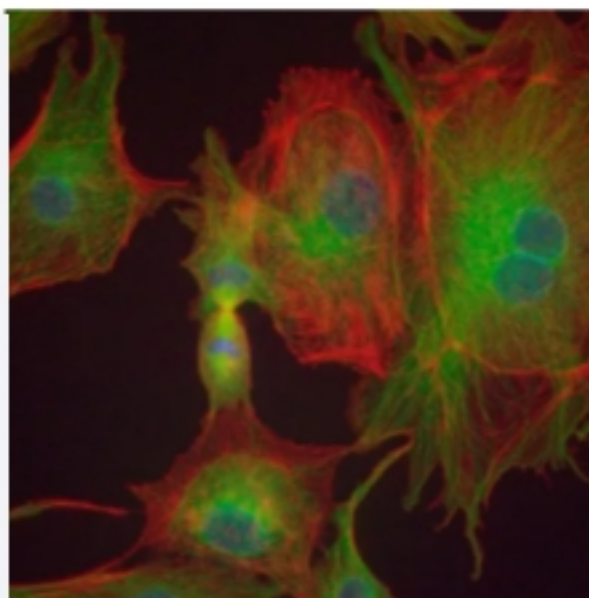


云展网

yunzhan365.com



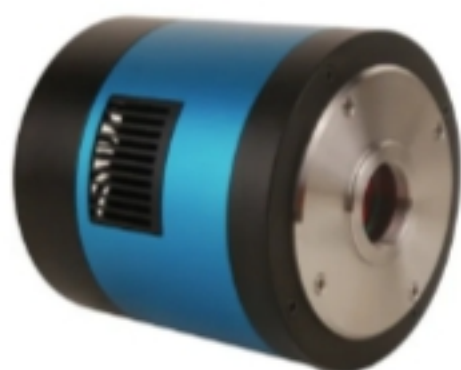
LED lamp house for fluorescence microscope, works well on Sunny, Novel, Olympus, Leica, Nikon, Zeiss Microscopes. It's ideal product to replace Mercury lamp. We're able to customize 360-1100nm max 9 channels device.



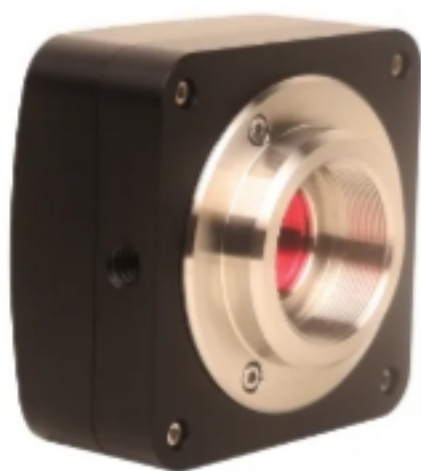
CAMERA



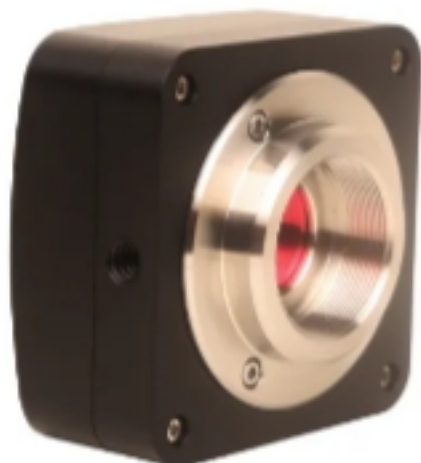
Resolution	Rate	Record time (memory)			Record time (hard drive)		
		16G	32G	64G	1TB	2TB	4TB
1280×1024	1000FPS	13s	26s	52s	13min	26min	52min
1280×800	1280FPS	13s	26s	52s	13min	26min	52min
1280×512	2000FPS	13s	26s	52s	13min	26min	52min
1280×256	4000FPS	13s	26s	52s	13min	26min	52min
1280×128	8000FPS	13s	26s	52s	13min	26min	52min
1280×800	70000FPS	23s	46s	92s	24min	48min	96min



Order Code	Sensor & Size(mm)	Pixel(μm)	G Sensitivity Dark Signal	FPS/Resolution	Binning	Exposure
MTR3CCD12000KPA MP112000A(New)	12.0M/ICX834AQG(C) 1"(13.15x8.77)	3.10x3.10	420mv with 1/30s 15.2mv with 1/30s	3.6@24248x2836 3.6@2124x1418	1x1 2x2	0.06ms-3600s
MTR3CCD12000KMA MP112000A(New)	12.0M/ICX834ALG(C) 1"(13.15x8.77)	3.10x3.10	420mv with 1/30s 12mv with 1/30s(F8.0)	3.6@24248x2836 3.6@2124x1418	1x1 2x2	0.06ms-3600s
MTR3CCD12000KPA MP112000A(New)	12.0M/ICX834AQG(C) 1"(13.15x8.77)	3.69x3.69	580mv with 1/30s 12mv with 1/30s	4.4@3388x2712 4.4@1694x1356	1x1 2x2	0.06ms-3600s



Order Code	Sensor & Size(mm)	Pixel(μm)	G Sensitivity Dark Signal	FPS/Resolution	Binning	Exposure
UA630MA UM900630A(2023)	6.3M/IMX178 (M) 1/1.8" (7.37x4.92)	2.4x2.4	760mv with 1/30s 0.15mv with 1/30s	5fps@3072x2048 20fps@1536x1024	1x1 2x2	0.244ms-15000ms
UA510CA UP900510A(2022)	5.1M/AR0521(C) 1/2.5" (5.70x4.28)	2.2x2.2	18.8ke-/lux 73dB 40dB	7.0@2592x1944 27.7@1296x972 100.5@648x486	1x1 2x2 4x4	0.2ms-2000ms
UA410CA UP900410A(2023)	4.1M/IMX347(C) 1/1.8" (7.795x4.408)	2.9x2.9	2376mv with 1/30s 0.15mv with 1/30s	8.5@2688x1536 11.5@2048x1536 15@1536x1536 34@1344x768	1x1 1x1 1x1 1x1	0.1ms-2000ms



Order Code	Sensor & Size(mm)	Pixel(μm)	G Sensitivity Dark Signal	FPS/Resolution	Binning	Exposure
ECMOS08300KPA EP608300A(New)	8.3M/IMX274(C) 1/2.5"(6.22x3.50)	1.62x1.62	236mv with 1/30s 0.1mv with 1/30s	4@3840x2160 16@1920x1080	1x1 2x2	0.244ms-15s
ECMOS06600KPA EP606600A(New)	6.6M/IMX326(C) 1/2.9"(4.98x3.50)	1.62x1.62	236mv with 1/30s 0.1mv with 1/30s	5@3072x2160 6@2592x1944 6@3072x1728 7@2160x2160	1x1 1x1 1x1 1x1	0.244ms-15s
ECMOS05300KPA EP605300A	5.3M/IMX178(C) 1/1.9" (7.37x4.15)	2.4x2.4	425mv with 1/30s 0.15mv with 1/30s	5.5@3072 x1728 35@1280x720	1x1 2x2	0.105ms-15s
ECMOS05000KPA EP605000A	5.0M/IMX335(C) 1/2.8" (5.18x3.89)	2.0x2.0	505mv with 1/30s 0.13mv with 1/30s	6.4@2592 x1944 26.7@1296x972	1x1 2x2	0.1ms-15s



云展网

yunzhan365.com

Suzhou Kira Optical Technology Co., Ltd

Add: Room 1019, Building 1, Xingguangyao
Commercial Plaza, No. 1583 Huchi Street, Gusu District, Suzhou City, Jiangsu Province, China

www.kiraoptical.com